

## REPEATER SOLUTIONS

Enhance Your In-Building  
Mobile Coverage

### The Growing Importance of Reliable Indoor Connectivity

In today's world, residential, commercial, and public building occupants increasingly rely on mobile devices for both business and everyday activities. They expect high-quality signal performance and consistent coverage throughout their premises. In addition, the rapid growth of IoT (Internet of Things) devices that depend on mobile networks for data exchange has further intensified the demand for robust in-building mobile coverage. As a result, delivering reliable indoor connectivity has become a top priority for operators, building owners, and enterprises.

#### Challenges



- **Network Costs:** High expenses associated with network deployment.
- **Technological Complexity:** Sophisticated technology that can be difficult to manage.
- **Lack of Skilled Workers:** Shortage of qualified personnel to operate and maintain the systems.

### Comba's Solution

To overcome these challenges, Comba offers a comprehensive portfolio of repeater solutions designed to ensure reliable voice calls and high-speed data coverage across various environments, including underground parking lots, stairwells, and other in-building areas.



### Key Features



#### Multi-Standard Support

Serves a wide range of applications.



#### Future-proof Technology

Ready for network refarming at any time.



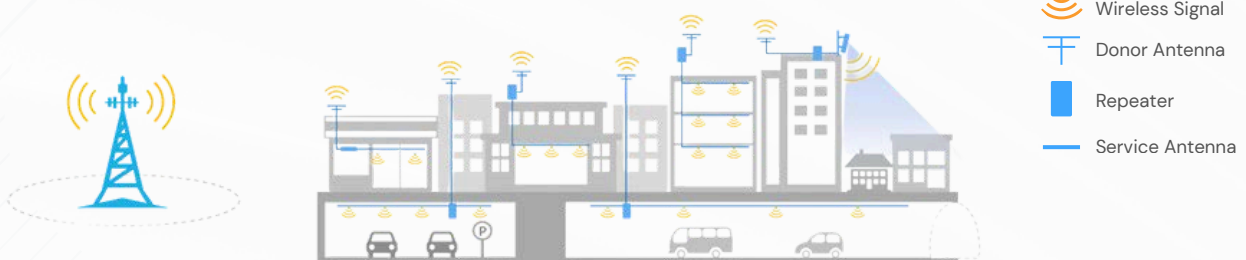
#### Flexible Budget Control

Lowers entry costs.



#### Low Transmission Condition Requirements

Operates efficiently under various conditions.

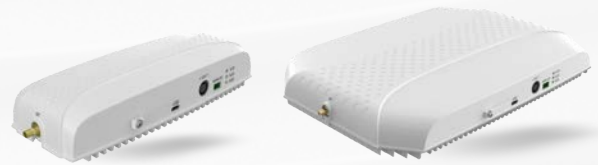


## PRODUCT RANGE FOR SINGLE OPERATOR

### mPico II: Practical & Cost-effective Coverage for Blind Spots

The mPico II series provides a practical, cost-effective solution for enhancing signal coverage in small buildings and hotspot areas. Its compact, lightweight design enables quick and easy installation.

- ✓ **Bands:** n28 / n20 / n8 / n3 / n1 / n78 CEPT67
- ✓ **Power:** Up to 24 dBm
- ✓ **Gain:** Up to 80 dB
- ✓ **Technologies:** GSM / UMTS / LTE / NB-IoT / NR / DSS
- ✓ **Coverage:** 300m<sup>2</sup>



Single Band

Dual Band & Triple Band



### mBDA Outdoor Series: Reliable Coverage for Today's and Future Cellular Services

The mBDA series addresses compromised radio coverage inside buildings and other obstructed areas. As a powerful amplifier, it boosts and distributes signals across various frequencies, ensuring optimal indoor coverage.

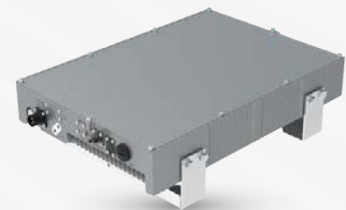
- ✓ **Bands:** n28 / n20 / n8 / n3 / n1 / n7 / n78 CEPT67
- ✓ **Power:** Up to 37 dBm
- ✓ **Gain:** 90 dB
- ✓ **Technologies:** TETRA / GSM / UMTS / LTE / NB-IoT / NR / DSS
- ✓ **Coverage:** 3,000m<sup>2</sup>



### RX Series: Flexible Configurations for Broader Coverage

The RX series is ideal for extending signal coverage into suburban areas or regions where signals are obstructed by buildings or terrain. It optimizes network performance by improving energy efficiency and reducing rollout time.

- ✓ **Bands:** n28 / n20 / n8 / n3 / n1
- ✓ **Power:** Up to 43 dBm
- ✓ **Gain:** 95 dB
- ✓ **Technologies:** UMTS / LTE / NR / DSS
- ✓ **Coverage:** >3,000m<sup>2</sup>



## PRODUCT RANGE FOR MULTIPLE OPERATORS

### mPico Max Series: Comprehensive Multi-Operators Signal Coverage

The mPico Max series is a compact, enterprise-grade solution designed to extend reliable wireless coverage in small indoor venues or blind-spot hotspots. A single unit supports multiple frequency bands, each hosting carrier - agnostic inputs, maximizing spectrum efficiency while minimizing hardware footprint. Compact and lightweight, mPico Max slashes deployment time and cost for multi-operators, multi-bands enterprise environments.



- ✓ **Bands:** n20 + n8 + n3 + n1 + n28 or n20 + n8 + n3 + n1 + n78 CEPT67
- ✓ **Power:** Up to 27 dBm
- ✓ **Gain:** Up to 100dB
- ✓ **No. of Sub-bands:** 4 sub-bands per band
- ✓ **Technologies:** TETRA / GSM / UMTS / LTE / NB-IoT / NR / DSS
- ✓ **Coverage:** <1,000m<sup>2</sup>

### mBDA-100 Series: Delivering Reliable Coverage for Today's and Future Services

Comba mBDA-100 series is the powerful modular design repeater solution to address the issue of compromised radio coverage inside buildings and other obstructed areas. Acting as an amplifier that boosts and distributes a signal covering various frequencies, mBDA product series ensures optimal indoor radio coverage in enclosed areas.



- ✓ **Bands:** n28 / n20 / n8 / n3 / n1 / n7 / n78 CEPT67
- ✓ **Power:** Up to 37 dBm
- ✓ **Gain:** 90 dB
- ✓ **No. of Sub-bands:** 4 sub-bands per band
- ✓ **Technologies:** TETRA / GSM / UMTS / LTE / NB-IoT / NR / DSS
- ✓ **Coverage:** 3,000m<sup>2</sup>

#### Enabling Communication to Connect People.

Visit our website or contact our representative for more information: [www.comba-telecom.com](http://www.comba-telecom.com)

LinkedIn



YouTube

